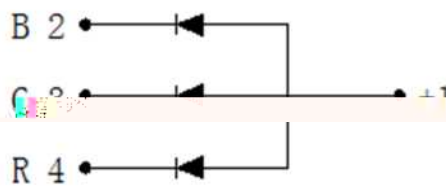
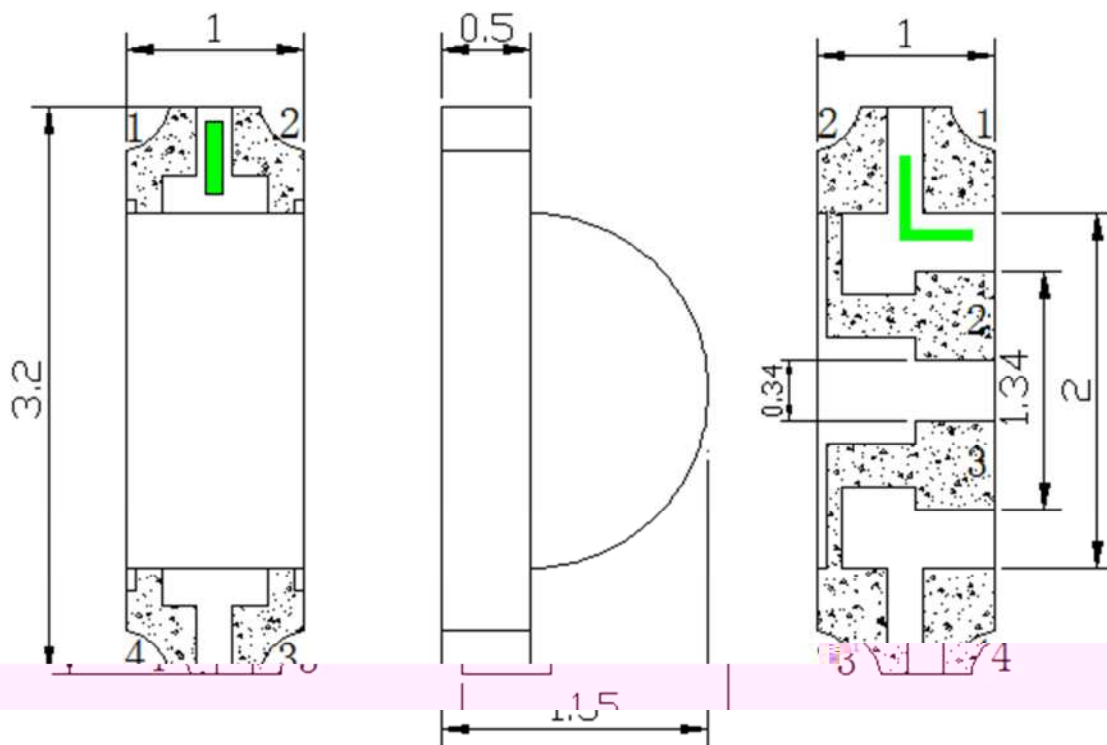


Features

- ◆ Pb free product—RoHS compliant
- ◆ Low power consumption, High efficiency
- ◆ Reliable and rugged
- ◆ High luminous intensity
- ◆ Long life – solid state reliability
- ◆ Viewing angle: 120°(R/G/B)

Package Dimension



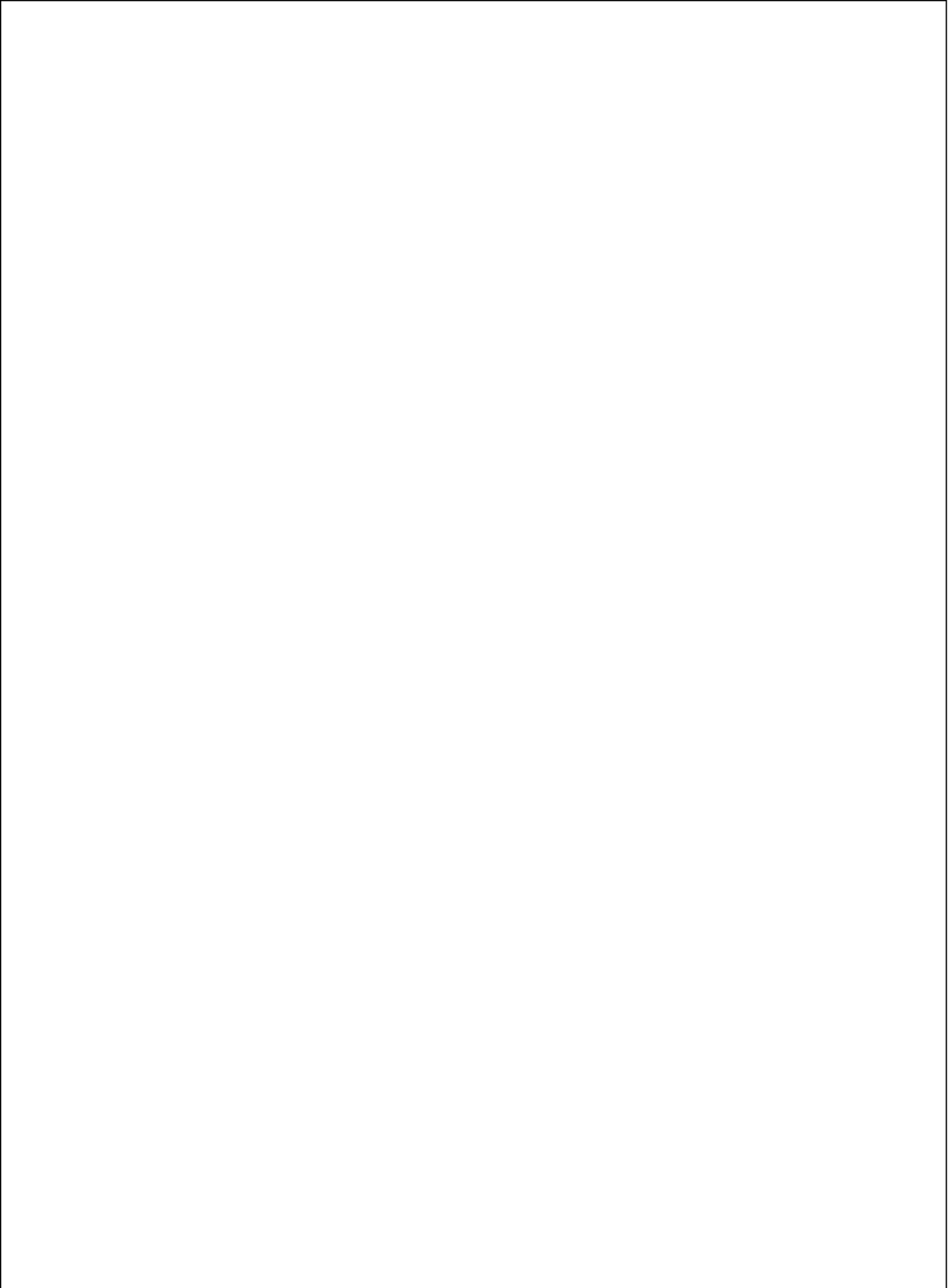
Part No.	Lens Color	Source Color
SL-T3210RGBC020-L150	Water Clear	Red/Green/Blue

Notes:

1. All dimensions are in millimeters.
2. Tolerance is $\pm 0.10\text{mm}$ unless otherwise noted.
3. Specifications are subject to change without notice.

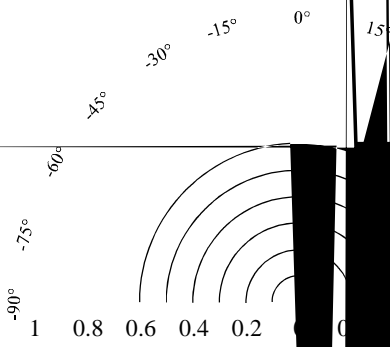
Absolute Maximum Ratings at Ta=25

Parameter	Red	Green	Blue	Unit
Power Dissipation	55	80	80	mW
Peak Forward Current ^{*2}	60	60	60	mA
Continuous Forward Current	25	25	25	mA
Reverse Voltage	5	5	5	V
Moisture Sensitivity Level ^{*1}	4			
Operating Temperature Range	-40 to + 85			
Storage Temperature Range	-40			



Part No.	SL-T3210RGBC020-L150	Page	4 of 8
-----------------	-----------------------------	-------------	---------------


Typical Electrical / Optical Characteristics Curves (25°C Ambient Temperature Unless Otherwise Noted)




0 20 40

Label Explanation

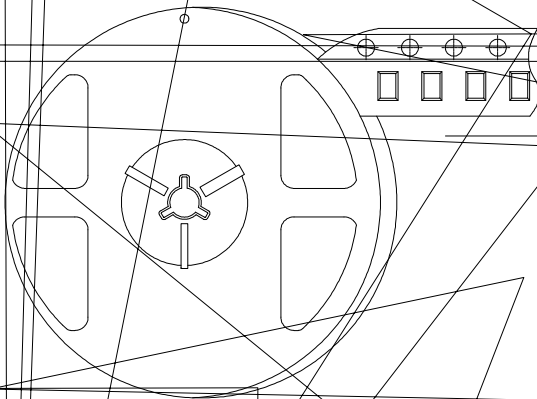
LIGHT Universal Label

LIGHT	
Light Electronics CO., LTD.	
MODEL NAME: _____	 LOT NO. : _____
QUANTITY: _____	
BIN: _____	
PACKING DATE: _____	
REMARKS: _____	

Customer Defined Label

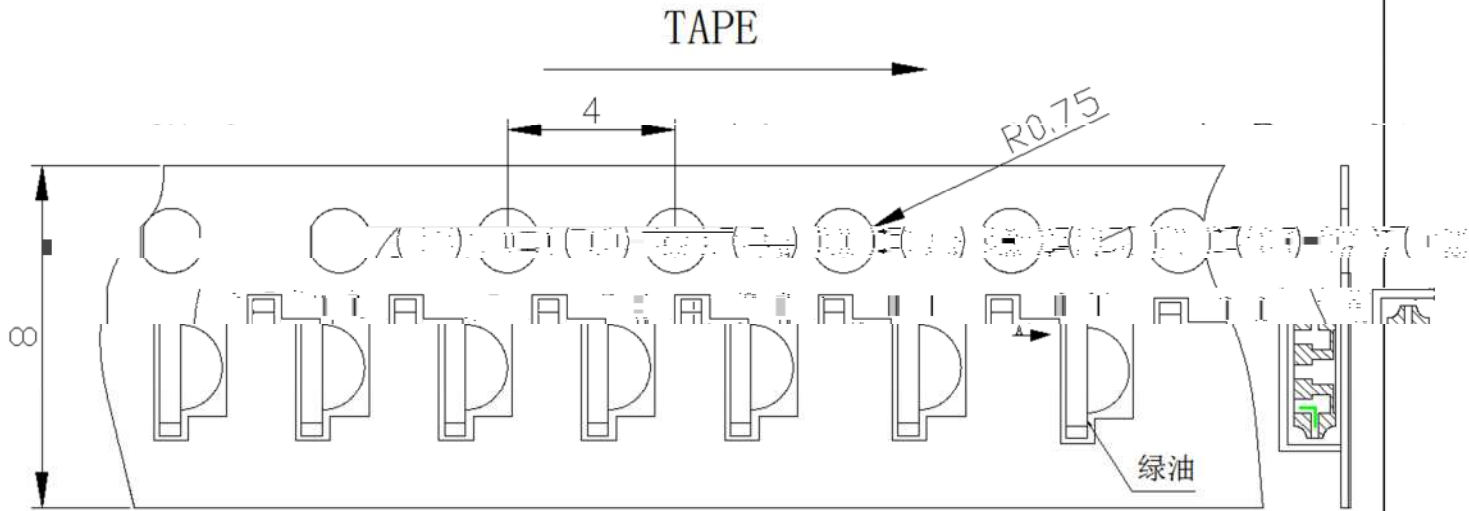
LIGHT	
Light Electronics CO., LTD.	
MODEL NAME: _____	 LOT NO. : _____
QUANTITY: _____	
BIN: _____	
PACKING DATE: _____	
CUSTOMER P/N: _____	

Reel Dimensions

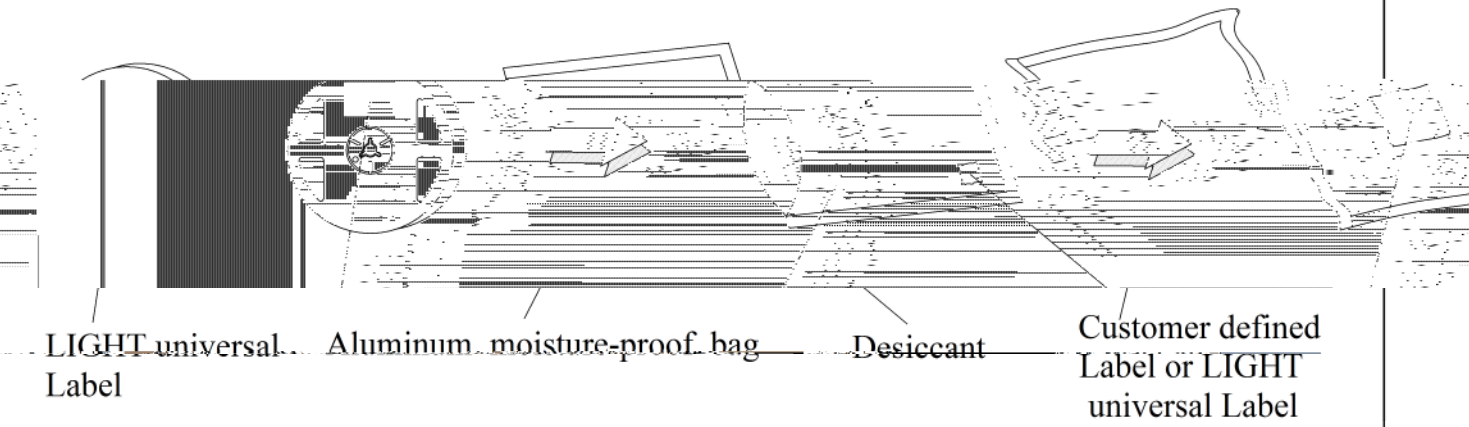


Note: Tolerance unless mentioned is $\pm 0.2\text{mm}$; Unit = mm

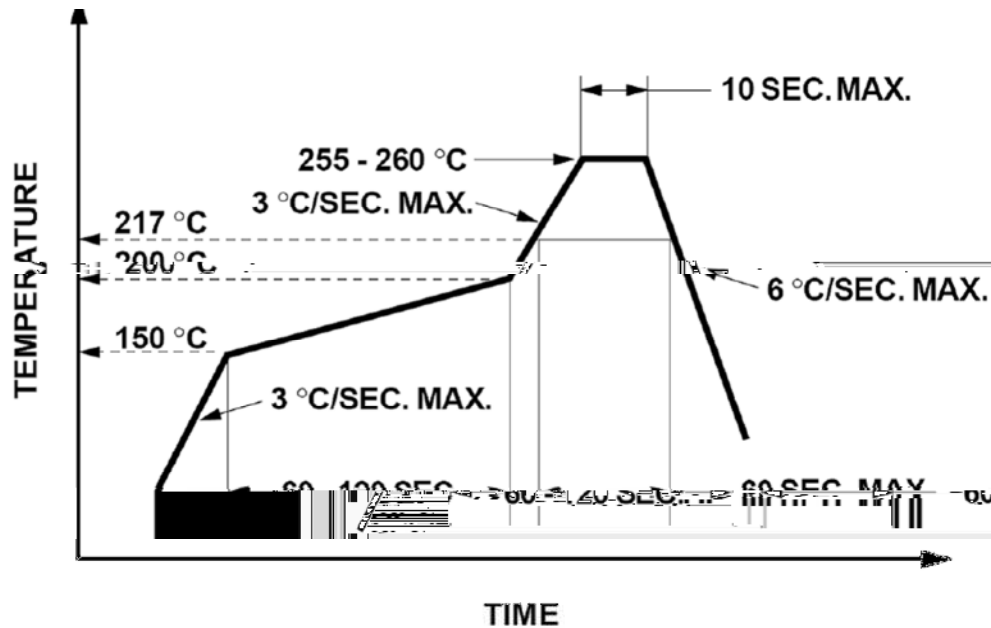
Carrier Tape Specifications(Loaded Quantity: 3000pcs/reel)



Moisture Resistant Packaging



Suggest IR Reflow Condition For Lead Free



1. Reflow soldering should not be done more than two times.
2. When soldering, do not put stress on the LEDs during heating.

Soldering iron

1. When hand soldering, the temperature of the iron must less than 300 °C for 3 seconds.
2. The hand solder should be done only once.

Repairing

Repair should not be done after the LEDs have been soldered. When repairing is unavoidable, a double-head soldering iron should be used (as below figure). It should be confirmed beforehand whether the characteristics of LEDs will or will not be damaged by repairing.

