

LG-T1921RGBA-TD-AL



LG-T1921RGBA-TD-AL

TOP Full-color LED

Catalogue

Electrical Characteristics3

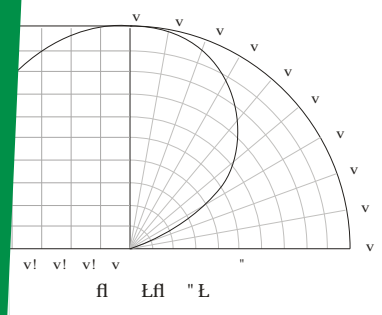
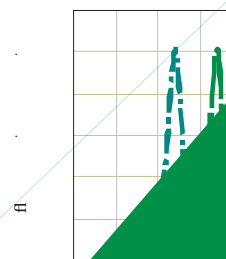
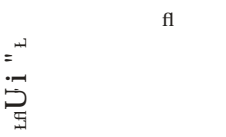
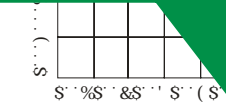
Typical Characteristics TD4764(i56 T 04 76 c 77.52 0.6 17rvew 9 0 0 34.25 TD[...2.731] GBA17 0.0 10

3

Typical

T_{Ambient} 125

f₁ f₂ f₃ f₄ f₅ f₆ f₇ f₈ f₉ f₁₀ f₁₁ f₁₂ f₁₃ f₁₄ f₁₅ f₁₆ f₁₇ f₁₈ f₁₉ f₂₀ f₂₁ f₂₂ f₂₃ f₂₄ f₂₅ f₂₆ f₂₇ f₂₈ f₂₉ f₃₀ f₃₁ f₃₂ f₃₃ f₃₄ f₃₅ f₃₆ f₃₇ f₃₈ f₃₉ f₄₀ f₄₁ f₄₂ f₄₃ f₄₄ f₄₅ f₄₆ f₄₇ f₄₈ f₄₉ f₅₀ f₅₁ f₅₂ f₅₃ f₅₄ f₅₅ f₅₆ f₅₇ f₅₈ f₅₉ f₆₀ f₆₁ f₆₂ f₆₃ f₆₄ f₆₅ f₆₆ f₆₇ f₆₈ f₆₉ f₇₀ f₇₁ f₇₂ f₇₃ f₇₄ f₇₅ f₇₆ f₇₇ f₇₈ f₇₉ f₈₀ f₈₁ f₈₂ f₈₃ f₈₄ f₈₅ f₈₆ f₈₇ f₈₈ f₈₉ f₉₀ f₉₁ f₉₂ f₉₃ f₉₄ f₉₅ f₉₆ f₉₇ f₉₈ f₉₉ f₁₀₀



Reliability Test Items And Conditions

实验项目	参考标准	实验条件	时间	样品数	判据
		↔			

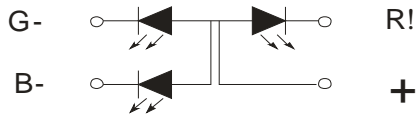
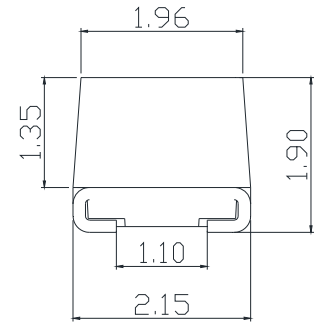
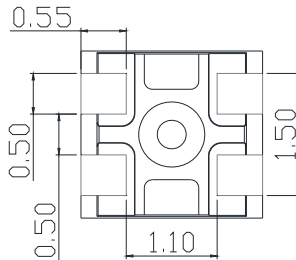
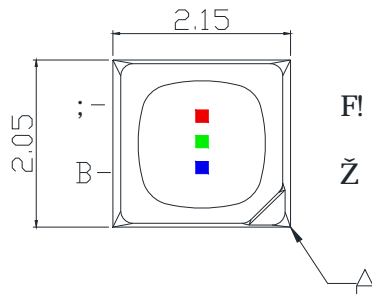
Criteria For Judging Damage

测试项目	符号	测试条件	判定标准
			μ
			≧ ≦

Product design and operational recommendation

1 mm

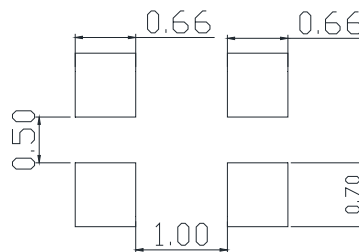
Product design Unit: mm



w w w w

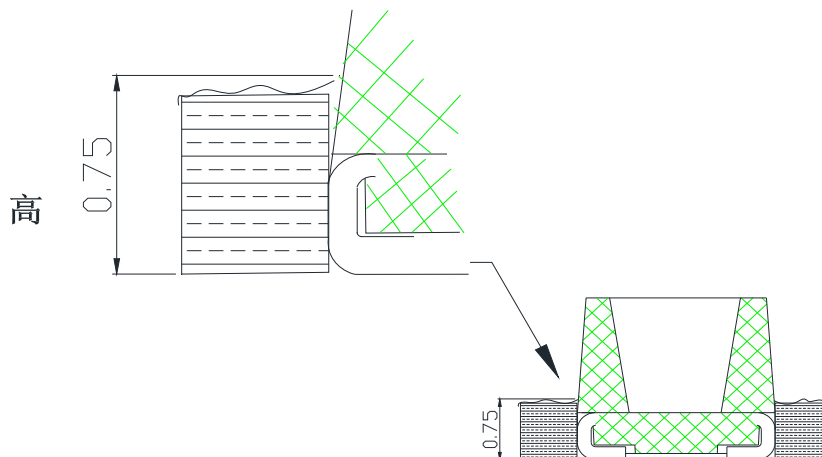
2 mm

Recommended soldering pad (Unit: mm)



3 0.75mm

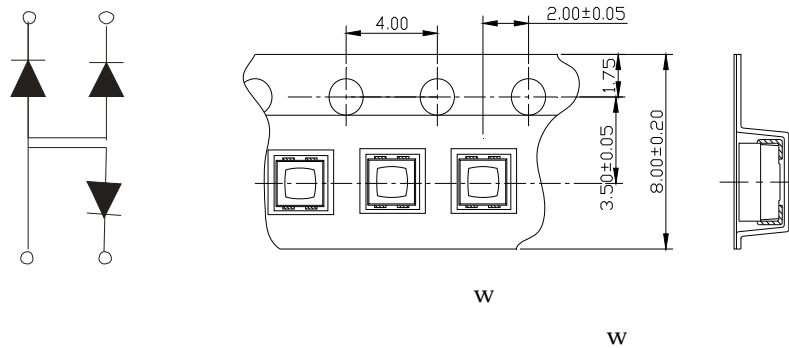
Recommendation for glue filling: filling height must be higher than or equal to 0.75mm



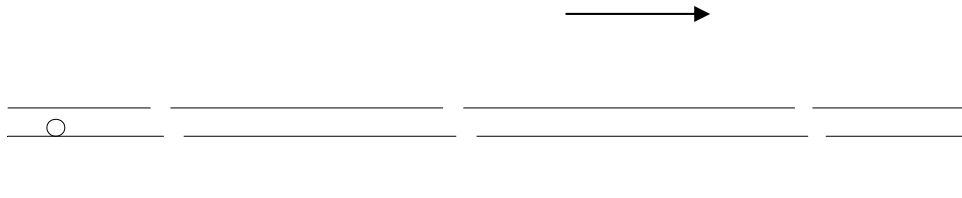
1

Packaging (1)

Carrier Tape



Details Of Carrier Tape



Reel Dimension

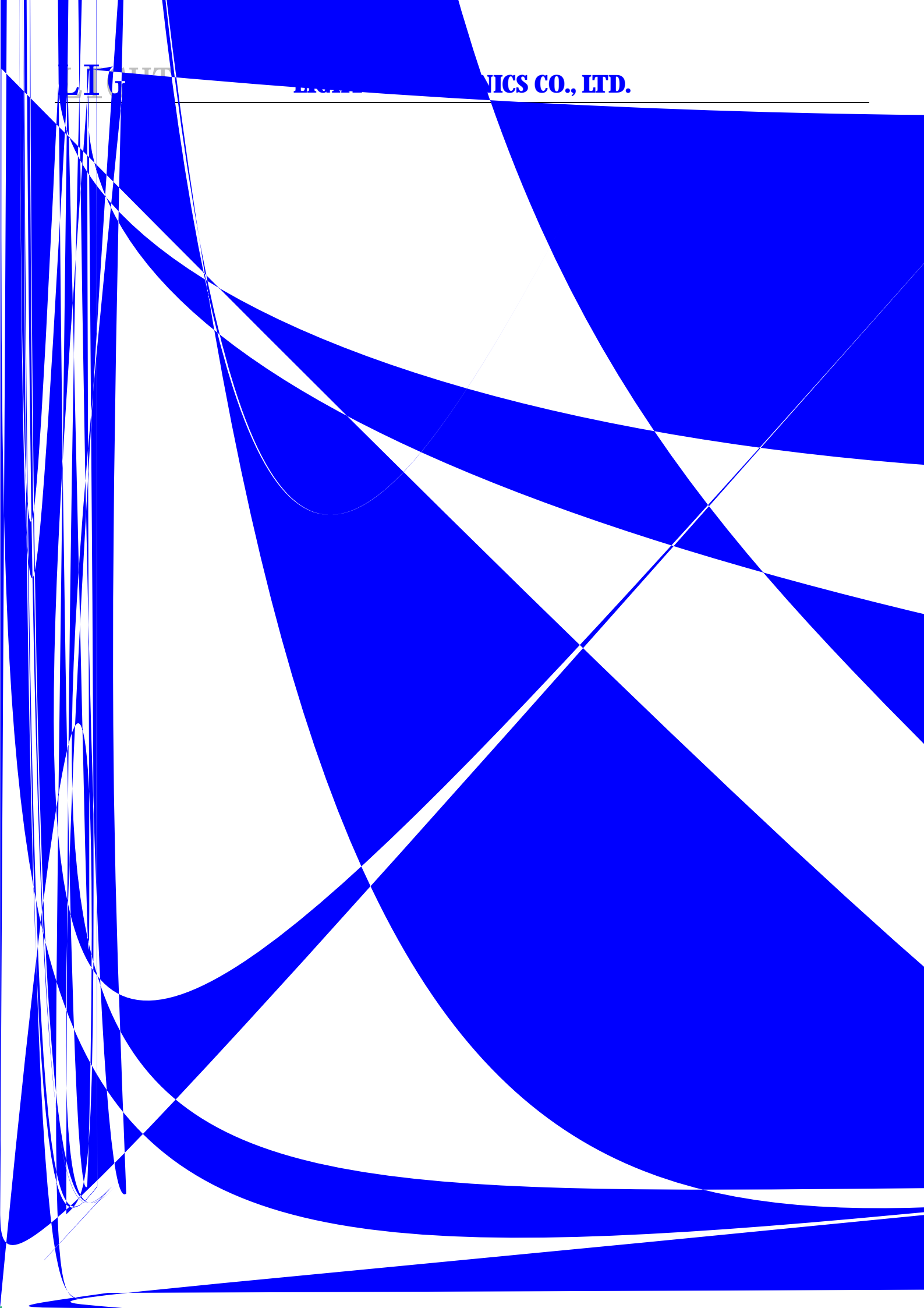


LIGHT

LIGHT ELECTRONICS CO., LTD.

LI G

ONICS CO., LTD.



2

Guideline for Soldering (2)

- x .
- x .
- x .
- x .
- x .

(2)

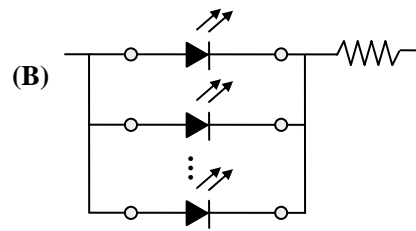
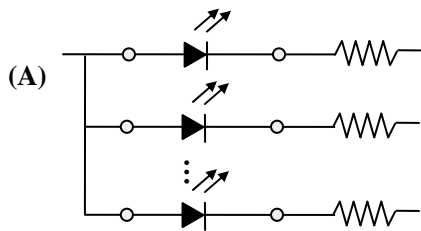
Precautions (2)

3.

Design Consideration

-

-



-

4.

Reverse voltage protection

-

